



Submittal Data Sheet

Indoor Unit Model#: ACiQ-24-ACL-B
Outdoor Unit Model#: ACiQ-18-HPD

24K EVAPORATOR A-COIL & 18K EXT. HEAT PUMP CONDENSER

Location:	Approval:
Engineer:	Date:
Submitted to:	Construction:
Submitted by:	Unit #:
Reference:	Drawing #:

System Product Code: 810175552828
A-Coil Product Code: 810175552637
Outdoor Unit Product Code: 810175550534



INDOOR UNIT SPECIFICATIONS

Dimension (WxDxH)	inch	17-1/2 x 21 x 18
	mm	445 x 533 x 457
Package (WxDxH)	inch	20-1/2x 26-1/8 x 20-7/8
	mm	520 x 665 x 530
Net/Gross Weight	lbs	42 / 50
	kg	19 / 22.5

OUTDOOR UNIT SPECIFICATIONS

Compressor Type		ROTARY
Compressor Model		KTM240D46UKT2
Refrigerant		R454B
Refrigerant Oil Charge (mL)		620
Refrigerant Oil		VG74
Outdoor Air Flow (Max) (CFM)		1,766
Outdoor Noise Level (dBA)		58
Dimension (WxDxH)	inch	35 x 13-1/2 x 26-1/2
	mm	890 x 342 x 673
Package (WxDxH)	inch	39-1/8 x 15-5/8 x 29-1/8
	mm	995 x 398 x 740
Net/Gross Weight	lbs	101 / 109
	kg	46 / 49.5

EFFICIENCY RATINGS

Cooling		Heating	
SEER2	16.1	HSPF2-4	9.5
EER2	11.7	COP	3.3

COOLING PERFORMANCE

Cooling (Btu/hr)	
Rated Capacity	18,000
Min/Max Capacity	5,600~22,800
Moisture Removal (L/h)	2.05
Standard Operating Range (°F/°C)	-22~122 (-30~50)
Rated Cooling Conditions:	Indoor: 80°F DB/67°F WB Outdoor: 95°F DB/75°F WB

HEATING PERFORMANCE

Heating (Btu/hr)	
1. @ 47°F Rated	19,000
1. @ 47°F Min/Max Capacity	5,600~22,800
2. @ 17°F Rated	15,200
3. @ 5°F Rated: Capacity / COP	18,000 / 2.06
3. @ 5°F Max. Capacity	18,000
Standard Operating Range (°F/°C)	-22~75 (-30~24)
1. Rated Heating Conditions:	Indoor: 70°F DB/60°F WB Outdoor: 47°F DB/43°F WB
2. Rated Heating Conditions:	Indoor: 70°F DB/60°F WB Outdoor: 17°F DB/15°F WB
3. Heating Conditions*	Indoor: 70°F DB/60°F WB Outdoor: 5°F DB/5°F WB

*Compressor Operating at Max. Frequency

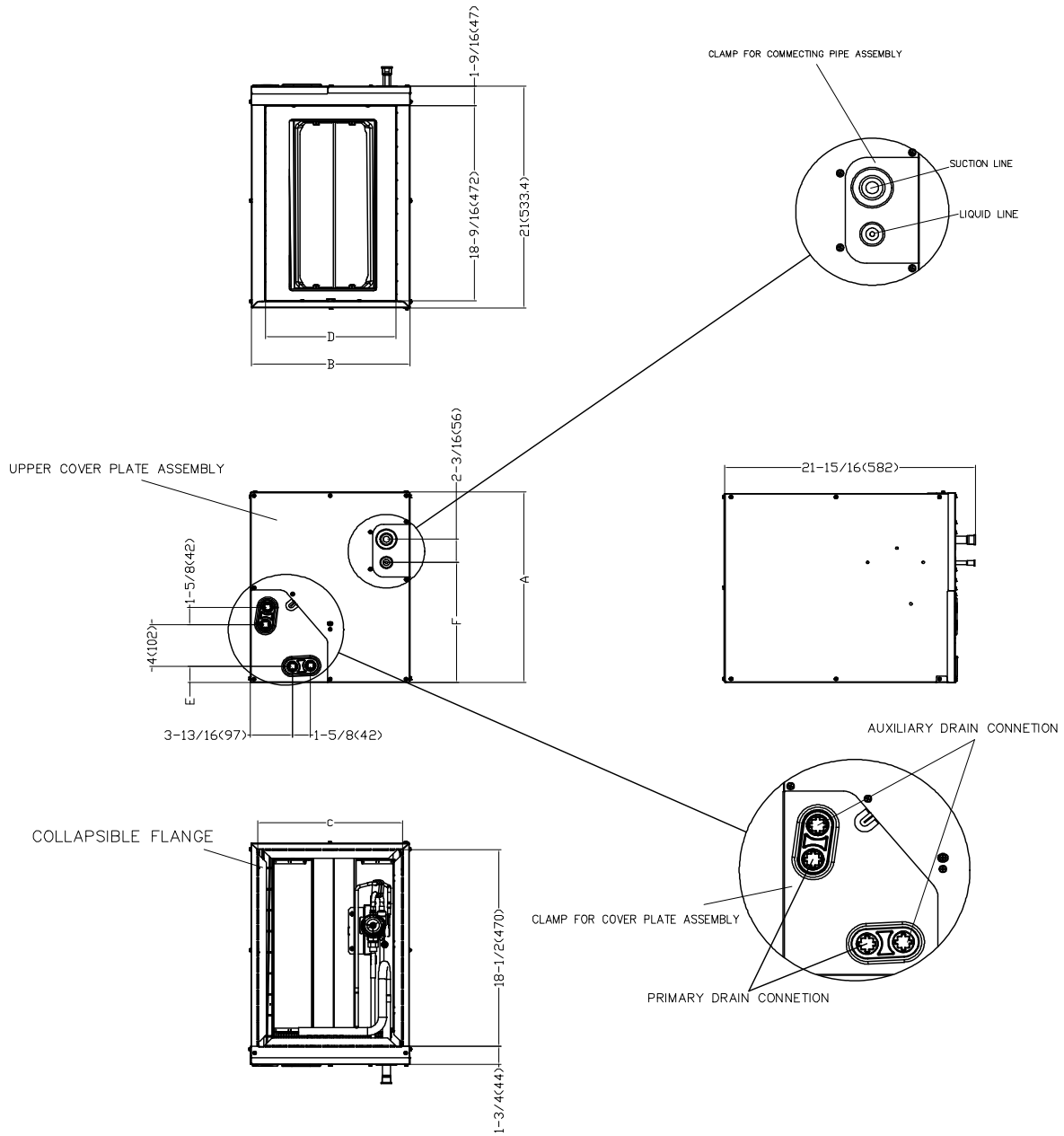
ELECTRICAL SPECIFICATIONS

Indoor Power Supply	24V, 60Hz, 1Ph
Indoor MCA 115V/(208/230V)	N/A
Indoor MOP	N/A
Outdoor Power Supply	208/230, 60Hz, 1Ph
Outdoor MCA	16
Outdoor MOP	20
Communication Wiring	AWG 20-2
Compressor RLA	10.5
Outdoor Fan Motor RLA	0.9
Outdoor Fan Motor W	N/A
Indoor Fan Motor RLA	N/A
Indoor Fan Motor W	N/A
System Power Input @ Cooling (W)	1,538 (530 ~ 2,120)
System Power Input @ Heating (W)	1,687 (350 ~ 2,040)
MCA: Min. circuit amps (A)	MOP: Max. overcurrent protection (A)
RLA: Rated load amps (A)	W: Fan motor rated output (W)

REFRIGERANT PIPING SPECIFICATIONS

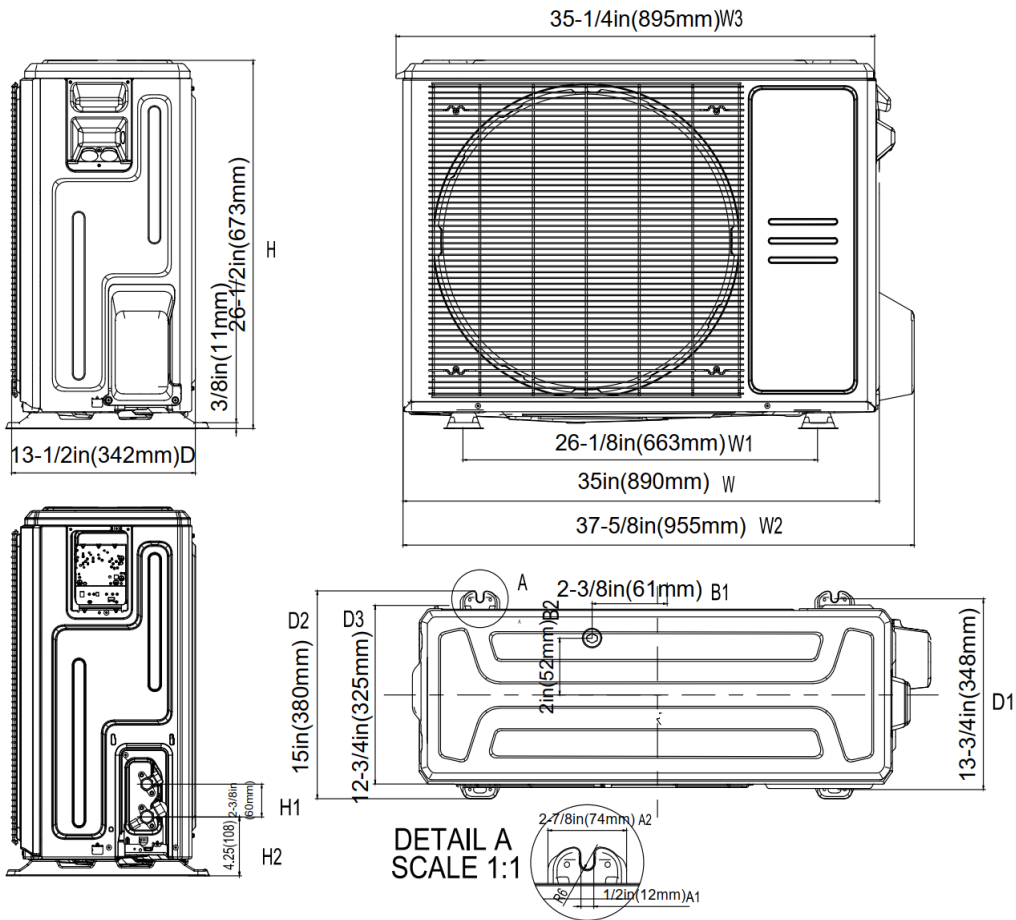
Throttle type (Indoor)	EXV
Throttle type (Outdoor)	EXV
Liquid Size	9.52 mm (3/8in)
Gas Size	19 mm (3/4in)
Max. Piping Length (ft/m)	98 (30)
Max. Height Difference (ft/m)	82 (25)
Max. Pre-charged Length (ft/m)	24.6 (7.5)
Refrigerant Pre-charged Amount (oz/kg)	74.08 (2.1)
Additional Charge of Refrigerant ((oz/ft)/(g/m))	0.7 (65)
Connection Method	Flared

INDOOR UNIT DIMENSIONS

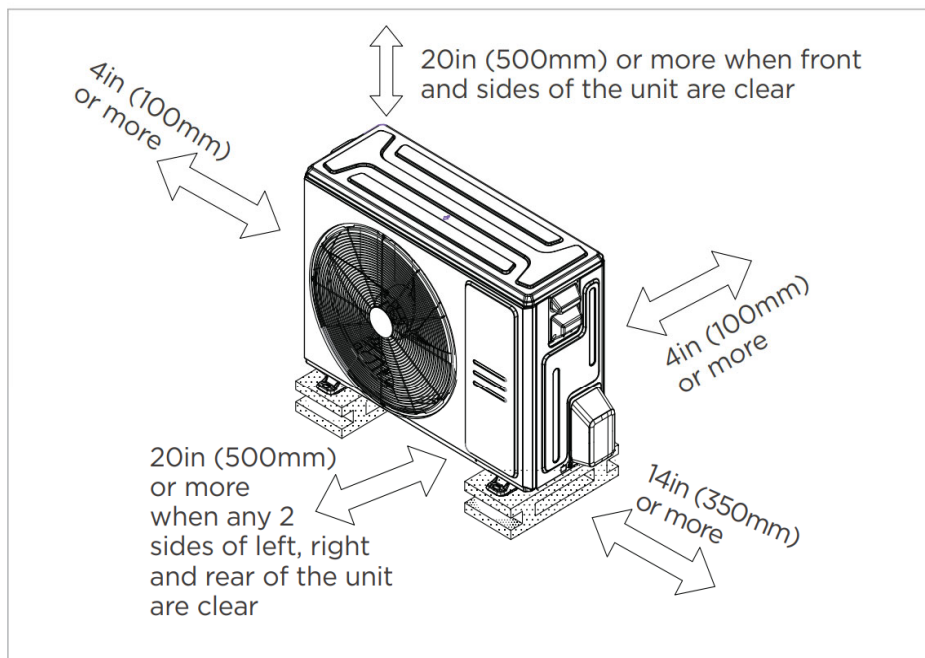


Dimensions	Model	ACiQ-24-ACL-B	ACiQ-24-ACL-14-B	ACiQ-36-ACL-B	ACiQ-36-ACL-17-B	ACiQ-48-ACL-B	ACiQ-60-ACL-B
		inch (millimeter)	inch (millimeter)	inch (millimeter)	inch (millimeter)	inch (millimeter)	inch (millimeter)
A	Unit Height	18 (457)	18 (457)	24 (611)	23-9/16 (599)	27-3/4 (706)	28 (711)
B	Unit Width	17-1/2 (445)	14-1/2 (368)	21 (534)	17-1/2 (445)	21-5/8 (549)	24-1/2 (622)
C	Supply Air Opening Width	16-3/16 (411)	13-1/4 (336)	19-3/4 (502)	16-3/16 (411)	21-1/4 (514)	23-1/4 (591)
D	Return Air Opening Width	14-15/16 (380)	11-15/16 (303)	19-1/2 (498)	14-15/16 (380)	20 (509)	23-1/8 (587)
E	Condensate Drain Height	1-7/16 (38)	1-7/16 (38)	2-3/16 (55)	1-7/16 (38)	2-1/8 (50)	2-3/16 (55)
F	Liquid Line Height	11-3/8 (290)	11-3/8 (290)	17-1/2 (445)	16-3/8 (417)	17-5/8 (449)	21-7/16 (545)

OUTDOOR UNIT DIMENSIONS



INSTALLATION INSTRUCTIONS FOR OUTDOOR UNIT



Meets all spatial requirements shown in Installation Clearance Requirements above.

FEATURES

- Multi-position installation: horizontal (left or right), vertical (up or down)
- Aluminum Coil
- R454B refrigerant sensor
- Easy Maintenance
- Multiple control options available:
 - Two way communication wired controller with built-in WiFi:120N(X6W)
 - Third-Party 24V Thermostat